

**PALATINE  
TOWNSHIP  
SENIOR  
CITIZENS  
COUNCIL**



# Annual Report for the Year Ending 2/28/10

**INSIDE  
THIS  
ISSUE:**

What We Do	2
Service Statistics	2
Helping Make Ends Meet	2
Expanding Horizons Through Travel	3
Keeping Up with Technology	3
Meals Programs	3
Volunteers	4
Heritage Society	4
Financial Information	5
Ongoing support	6
Donors	6
Ability is Ageless	8
Board of Directors	8
Staff	8

## PTSCC: Supporting the independence of older adults

The Palatine Township Senior Citizens Council, (PTSCC) which operates the Palatine Township Senior Center, has been helping older adults stay active in the community for over 35 years. Even during the recent difficult economic times, PTSCC has continued to expand its services through grants and donations. In 2009:

PTSCC took over the management of the noon dining and home delivered meals programs;

Operated the “Vale de Restaurante” program targeting Spanish speaking older adults funded through Federal stimulus funds;

Was awarded Central Point of Entry designation by AgeOptions to provide information and referral services;

Started a caregiver support group for those caring for someone with memory loss;

PTSCC’s newsletter “The Happenings” was awarded newsletter of the year by the Association of Illinois Senior Centers.



Left to Right, Mary Szuch, PTSCC Board Chair and Principal, Frank C. Whiteley School, Community Consolidated School District 15 and Carol Reagan, Executive Director

E.D.G.E. (Exciting Destinations and Getaway Excursions) program began, offering dog sledding and charter fishing.

PTSCC was awarded a

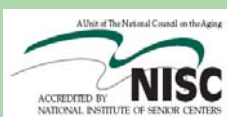
year-long VISTA volunteer through The Volunteer Center of Northwest Suburban Chicago.

A college student volunteer redesigned our website, [www.ptsc.org](http://www.ptsc.org).

Executive Director Carol Reagan was elected Chair-Elect of the National Institute of Senior Centers, an organization of professionals dedicated to enhancing the lives of older adults through professional development, advocacy and promotion of national standards.

We couldn’t provide the quality or number of services we do without the time, talents and hard work of our many volunteers. Details on their many contributions can be found on Page 4. Thank you!

**Our mission is to provide programs and services which support the independence and well-being of older adults and promote their participation in the community.**



## What We Do



Members of the PTSCC Golf League take a break .

PTSCC offers a wide variety of programs and services designed to help older adults and their families enjoy life to the fullest. Our education, health and wellness, noon dining, home delivered meals, adult day care, recreation and social services

programs are available to persons 50 and better and their families who live in Palatine Township and the surrounding communities in the north and north-west suburbs of Chicago. While most of our clients live in Palatine Township, last

fiscal year, we served individuals and their families from over 75 different communities. Services are available in English, Spanish and Russian at eight satellite locations. Our Social Services staff also make home visits as needed.

Our Social Services staff can assist clients who qualify to save approximately \$1,000 per year.

## Service Statistics In FY 2010, we served 2,773 clients for the following:

<u>Service</u>	<u>Clients Served</u>	<u>Units</u> (hrs of service e.g.)
Education	366	3,262
Health & Wellness	271	3,418
Noon Dining	352	4,518
Home Delivered Meals	154	12,396
Recreation	868	12,501
Social Services	1,292	4,217

## Helping Make Ends Meet

Ed and Lois (not their real names) were at their wits end. Ed is a diabetic with multiple health problems, and Lois, who is younger, has no medical care. They needed help with their finances and help coping with medical

problems. Through the efforts of our Director of Social Services, Ed and Lois have been connected with a local church for emotional & psychological support, Catholic Charities Northwest for the Community Care

Program, the Palatine Township food pantry, LIHEAP, Circuit Breaker.

Our Social Services staff can help clients who qualify to save approximately \$1,000 per year!

## Expanding Horizons through Travel



PTSCC offers the opportunity to learn about and visit new places, meet new people and make new friends. Whether it's a

trip around Lake Michigan, paying respects at a memorial in Washington, D.C., seeing a Broadway production, testing one's luck in Las Vegas or at one of Illinois' casinos, our trips offer something for everyone. This year, the E.D.G.E. (Exciting Destinations and Getaway Excursions) program

offered dog-sledding and charter fishing.

Future trips include Italy and Ireland in 2011. Come join the fun!



*This year, the E.D.G.E. (Exciting Destinations and Getaway Excursions) program offered dog-sledding and charter fishing.*

## Keeping Up With Technology

The 50+ Computer Learning Center (formerly known as SeniorNet) offers a wide variety of computer classes, from multi-week classes on computer basics and Word to one day workshops such as selling on

eBay, shopping on line, picture editing and brain games. There is open lab time each week for students to practice the skills they are learning, get questions answered or make up a lesson. All the instructors and coaches for the 50+

Computer Learning Center are older adult volunteers.

PTSCC offers a variety of other educational programs in addition to computer classes.

## Meals Programs

Lunch is a time to gather with friends and share a good meal. "Our Place Café" offers noon dining to people aged 60 years or better through a grant from AgeOptions. Each meal is designed to meet

one third of the necessary daily requirements for an older adult.

Qualifying home-bound older adults can have a hot meal delivered to them daily through our home delivered meals

program. Volunteers deliver meals in temperature controlled containers and check on the well-being of the person receiving the meal. This program is also funded through AgeOptions.

## Volunteers

In FY 2010, over 300 volunteers donated 19,543 hours valued at over \$407,000.



2010  
Computer Learning  
Center  
Volunteer of the Year  
Sung Kim  
displays his award  
at the Annual  
Volunteer Recognition

<u>Program</u>	<u># of Hours</u>	<u>Program</u>	<u># of Hours</u>
Adult Day Care	258	Meals on Wheels	2,735
Board of Directors	218	Multicultural	4,880
Escort Transportation	104	Noon Dining	1,103
Facility	20	Office	1,821
Friendly Visitor	182	Recreation	4,103
Fundraising	325	50+ Computer Learning Center	2,150
Income Tax Assistance	272	Shopping	256
SHIP*	85	VISTA	953
		Website redesign	80

## Heritage Society: Planting Seeds for the Future

Membership in the Heritage Society is available to donors pledging inclusion of PTSCC in their estate plans and to those contributing qualifying amounts to PTSCC's endowment., The Stokes Fund.

Robert\* and Martha Atherton

Michael and Ann Babiarz

Cornerstone National Bank and Trust Company

Harris N.A.

Jack A. and Linda C. Lloyd

Donald\* and Natalie Nii

David F. Schultz Associates, Ltd.-Church Architects

Rembert and Lee Stokes

Mary Tarbit

\*Deceased

*Plant seeds for  
the Future!  
Include PTSCC in  
your estate plans.*

# Financial Information for the Year Ending February 28, 2010

## Statement of Assets, Liabilities and Fund Balance as of February 28, 2010

## Income by Source

### ASSETS

Current Assets	
Checking/savings	\$167,095
Endowment	\$110,841
Other current assets	\$50,085
Building renovation & Furniture (net of depreciation)	<u>\$797,500</u>

**TOTAL ASSETS \$1,125,521**

### LIABILITIES

Building renovation repayment	\$539,175
Accrued expenses	\$22,745
Deferred revenues	\$25,353

**TOTAL LIABILITIES \$587,273**

**FUND BALANCE \$538,248**

### Category

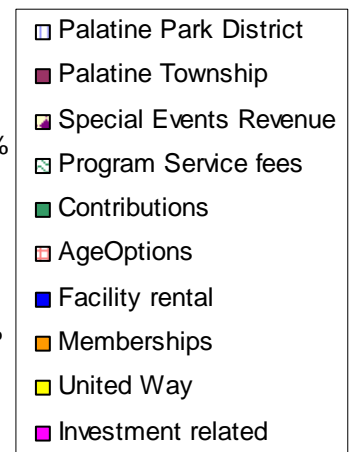
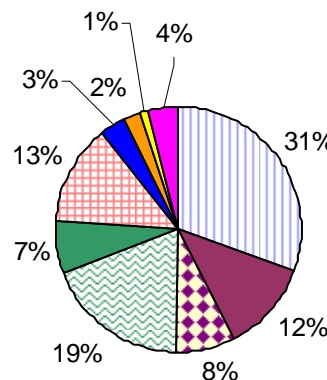
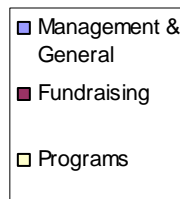
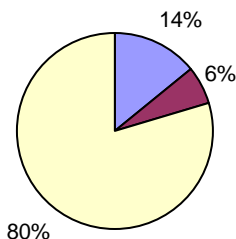
Amount	% of total
Palatine Park District	\$286,251 30.6%
Palatine Township	\$110,003 11.8%
Special Events Revenue	\$73,463 7.9%
Program Service fees	\$176,611 18.9%
Contributions	\$65,611 7.0%
AgeOptions	\$124,904 13.4%
Facility rental	\$30,397 3.3%
Memberships	\$19,570 2.1%
United Way	\$11,208 1.2%
Investment related	\$36,663 3.9%
<b>Total</b>	<b>\$934,681 100%</b>

## Expenses by Category

Total expenses for year end 2/28/10=\$903,507

### Programs

Education	8.32%
Health	4.39%
Nutrition	13.85%
Recreation	38.66%
Social Services	34.79%



Independent audit conducted by Russell P. Cannizzo and Company. Copies of the audit report, IRS Form 990 and AG 990 are available by request.

We gratefully acknowledge the support of the following:

### Corporate Members

#### Platinum Club

Northwest Community  
Healthcare

#### Gold Club

American Chartered  
Bank  
Bank of Palatine  
Cornerstone National  
Bank & Trust Co.  
Harris Bank  
Northrop Grumman

#### Silver Club

50 Plus Computer  
Learning Center  
Brandt Financial  
Concepts, Inc.  
Church Creek  
Comfort Keepers  
Kiwanis Club of Palatine  
Martin C. Kelley of  
Kelley Kelley and  
Kelley, Attorneys  
& Counselors at Law

#### Silver Club Cont.

Lake Barrington Woods  
Lavelle Law, Ltd.  
ManorCare Health  
Services  
The Moorings of  
Arlington Heights  
Tamarack, Gracious  
Retirement Living

### Ongoing Support

Palatine  
Park District

Palatine  
Township

AgeOptions

CCSD 15

United Way

Village of  
Palatine

### Thanks!

Our thanks to our many contributors. Every gift is important, and contributes to our success. The following is a partial list of contributors to PTSCC for the time period March 1, 2009 to February 28, 2010. Space does not allow listing support through memberships or purchase of tickets to special events. If we missed you, or incorrectly spelled your name, please call us at 847-991-1112.

#### \$2,000 & Above

Ray & Judy  
McCaskey  
Northwest Community  
Healthcare  
Martha Atherton  
Women's Club of  
Inverness

#### \$1,000—\$1,999

The Family of Rose  
Buchanan  
Northrop Grumman  
PAETEC  
Palatine Women's  
Club  
Mary Tarbit

#### \$500—\$999

American Chartered  
Bank  
Anonymous  
Bank of Palatine  
Brandt Financial  
Concepts  
Comfort Keepers

#### \$500—\$999 (cont'd)

HCR-ManorCare  
Hodges, Loizzi,  
Eisenhammer,  
Rodick & Kohn  
Martic C. Kelley,  
Kelley Kelley & Kelley  
Attorneys &  
Counsellors At Law  
Lake Barrington  
Woods  
Lavelle Law, Ltd.  
A. L. Sittaro  
Tamarack  
The Moorings of  
Arlington Heights  
Tom & Kathy Vincus

#### \$250—\$499

Greg & Martha Blus  
Patric & Sarah Donahue  
Ann Erickson  
Linda Fleming  
HCR-ManorCare  
Law Offices of Bruce  
Kiselstein

#### \$250 - \$499 (cont'd)

Scott & Sherri  
Lamerand  
St. Viator High School  
Rem & Lee Stokes  
The Northern Trust  
David & The Reverend  
Judith Watt  
Edna Yost

#### \$100—\$249

Anonymous  
Beatrice Banker  
Suzanne Bassi  
Paul & Dorie Bohlmann  
Russell P. Cannizzo &  
Co.  
Brent Coleman  
Eastgate Manor  
Karen & Dan Fay  
Bob Haas  
Lilian Haass  
Allen Helms  
Alice Jensen  
Rick & Maralyn Kolze

**\$100—\$249 (cont'd)**

Alexander Kush  
 Barbara Mancuso  
 Kathy Millin  
 Scott & Robin Moran  
 New Life Community  
 Church of IL  
 Omega Home  
 Healthcare, LLC  
 Reid Ottesen  
 Janet Ryan  
 Raymond Schulenberg  
 Jim & Brenda Schwartz  
 Frank & Mary Szuch  
 The Presbyterian Church  
 of Palatine  
 Don Van Cleave  
 Whitehall North LLC

**\$99 & Below**

Anonymous  
 Patrick & Mary Baines  
 Rick & Val Banas  
 Marlene Bellamy  
 Ann Bornman  
 Betty Bruce  
 Epifania Castro  
 Gloria Dahlinghaus  
 Rebecca Deforest  
 Elvira Del Camp  
 Susie & Marvin Dickman  
 Jeffrey & Linda  
 Dionesotes  
 Michelle Farmer  
 Betty Foreman  
 William & Mary Lou Griffin  
 MaryLou Hansen  
 Barbara Holtz  
 Liborio Ibarra  
 Mary Lusignan  
 M & B Landscaping  
 Brian & Carolyn  
 McDonald  
 Edelgard Militello  
 Arlene Miller  
 Colleen Mnichowicz  
 Northwest Suburban  
 Special Education Org.  
 Micki Paprocki  
 Robert & Marcia Parker  
 Dennis & Carol Reagan  
 Eugene Romano  
 Al & Lois Rubin  
 Sheila Schwartz  
 Deborah Sonoda  
 Gay Strakshus  
 Linda Sybrant  
 Barbara Terry  
 The Monitor Group, Inc.

**\$99 & Below (cont'd)**

Don & Jane Truitt  
 Lawrence Voyles  
 W. D. Hoard & Sons Co.  
 Evelyn Weissmuller  
 Almonese Williams

**In Kind**

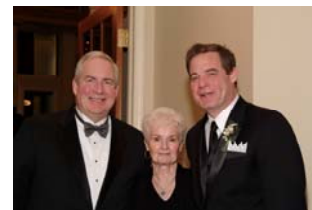
Ace Hardware  
 Air Tran Airways  
 American Home Care  
 Anonymous  
 Anthem Grill  
 Arbonne International  
 Arlington & Buffalo Grove  
 Theaters  
 Arlington Park  
 Artistic Cuisine  
 Bangerang Bake Shop  
 Barrington Draperies &  
 Shutters, Inc.  
 Sandra Volid Bauer  
 BlueCross BlueShield of  
 Illinois  
 Bob Chinn's Crab House  
 Bonnie Lindholm School  
 of the Dance  
 Brandt Financial  
 Concepts  
 Broadway in Chicago  
 Linda Brown  
 Buehler YMCA  
 Byhring Jewelers  
 Catered & Picnic  
 Productions  
 Chandelier Boutique  
 Chicago Blackhawks  
 Chicago Botanic Garden  
 Chicago Cubs  
 Chicago Shakespeare  
 Theatre  
 Chicago Wolves Pro  
 Hockey  
 Collins Backflow  
 Phyllis Corcoran  
 Cotillion Banquets  
 Emily Curtis  
 Des Plaines Office  
 Equipment  
 Dick's Sporting Goods  
 Dominicks Finer Foods  
 (Euclid)  
 Dominicks Finer Foods  
 (Dundee)  
 Duggan & Brown  
 Dirty Nellie's  
 El Chicanito Bakery  
 Gloria Ezan  
 Karen Fay

**In Kind (cont'd)**

Norbert Flowers  
 Gemma Quinn Baby  
 Golf Nation  
 Heavenly Massage  
 Doris Heilman  
 Lee Henson  
 Hoffman Estates Park  
 District  
 Keith Hoover  
 Illinois Sports Facilities  
 Authority  
 Inverness Park District  
 Charu Jain  
 Jewel Foods (Dundee)  
 Paul Jochim  
 John G. Shedd Aquarium  
 Nancy Kane  
 Lou & Mary Kittler  
 Robert Klassy  
 Rick & Maralyn Kolze  
 Barb Kranz  
 La Rosita Grocery Store  
 Tammy Leiterman  
 Richard Les  
 Los Arcos Taqueria  
 Lou Malnati's Pizzeria  
 Lynfred Winery  
 Kathy McAvoy  
 Medieval Times  
 Metropolis Performing Arts  
 Centre  
 Midtown Athletic Club  
 Mint Julep Bistro  
 Monson Jewelers  
 Larry & Margaret Newsom  
 Northrop Grumman  
 Northwest Community  
 Healthcare  
 Northwest Spine &  
 Healthcare Group  
 Cookie Null  
 Nancy Oakford  
 Palatine Complete Dental  
 Palatine Jaycees  
 Palatine Park District  
 Palatine Township  
 Palatine True Value  
 Panera Bread -Chicago  
 Kris & Mark Paquin  
 Port Edward Restaurant  
 Private Quarters Bedding,  
 Towels & Gifts  
 PRP Wine International,  
 Inc.  
 PTSCC Quilters  
 Carolyn Ray  
 Carol Reagan

**In Kind (cont'd)**

Rick's Insurance Agency  
 Rogers & Hollands  
 Rosebud Restaurants  
 Janet Ryan  
 Safety Training Associates  
 Salon 134 West  
 Salon Cienna  
 Salon Two Twenty  
 Salt Creek Rural Park  
 District  
 Sampson Fine Arts  
 Photography  
 Sheila Schwartz  
 Shaw's Crab House  
 Shear Pleasure, Ltd.  
 Doris Sherden  
 Consuelo Silva  
 Maria Cidelia Silva  
 St. Theresa Church  
 Nancy Stanish  
 Stir Crazy  
 Laurie Stock  
 Arlene Swanson  
 Frank & Mary Szuch  
 Pam Tackett  
 Taqueria Michoacan  
 Thai Garden  
 The Buckingham Athletic  
 Club  
 The Patty Ancona Group  
 The Volunteer Center of  
 Northwest Suburban  
 Chicago  
 United Airlines  
 Uptown Cafe  
 Susan Van Slyke  
 Victoria's Mexican Grill  
 Elizabeth Walker  
 Weber-Stephens Products,  
 Inc.  
 Cheryl Westin  
 Woodside Ranch  
 Wyatt Austin Jewelers  
 Zales, The Diamond Store  
 Cynthia Zyzanski



Right to left: PTSCC Second Vice  
 Chair Martin C. Kelley, Honorary  
 Chair of the 2010 Caring Hearts  
 Gala, mother Patricia and brother  
 Bill Kelley



## Palatine Township Senior Citizens Council

505 South Quentin Road  
Palatine, IL 60067

Phone: 847-991-1112

Fax: 847-991-9605

E-mail: [ptsccinfo@ptscc.org](mailto:ptsccinfo@ptscc.org)

Follow us on:



**A non-profit agency serving the community since 1973.**

## Ability is Ageless



2010 Caring Hearts Gala Guest of Honor James Jack, pictured here with PTSCC Executive Director Carol Reagan, is living proof that ability is ageless. Jack is embarking on the third career of his life at a time when many would be content to relax. Jack, 81, was a Chicago police detective who used his experiences to become an award winning author of the true story Three Boys Missing, the heart-breaking tale of three young boys who went to the movies and never came home. His third book, The Last Dance: Family Secrets and the Chicago Mob, scheduled to be published in 2010, is being made into a movie, and Jack will be acting as a consultant to the process.

**We're on the Web!**  
<http://www.ptscc.org>

# Thanks to our dedicated Board and staff:

### PTSCC Board of Directors

During the time period 3/1/09 - 2/28/10

Mary Szuch, Chair  
Laurie Stock, First Vice Chair  
William Hobbs, Second Vice Chair  
(part of year)  
Martin C. Kelley, Second Vice Chair  
(appointed)  
Patric Donahue, Treasurer  
Cheryl Westin, Secretary

#### Directors

Phyllis Corcoran  
Karen Fay  
Charu Jain  
Jorge Juarez  
Rita Lintzeris  
John Mahler  
Margaret Newsom  
Denise Petersen  
Mel Quinn  
Sheila Schwartz  
A. L. Sittaro  
Pamela Stoltz



### Members of the Board at the 2010 Caring Hearts Gala.

Pictured, left to right:

Front row: Margaret Newsom, Denise Petersen, Pamela Stoltz, Mary Szuch, Sheila Schwartz, Rita Lintzeris, Phyllis Corcoran.

Second row: Patric Donahue, Laurie Stock, A.L. Sittaro, Cheryl Westin, Jorge Juarez, John Mahler

### PTSCC Staff

During the time period 3/1/09- 2/28/10

Carol Reagan, Executive Director  
Trisha Abbey, Director of Social Services  
Beatrice Banker, Administrative Coordinator  
Diane Lancour, Program Director  
Nina Vaynrub, Social Service Representative/Russian Liaison  
Angie Mira, Social Service Representative/Hispanic Liaison  
Megan Conway, Social Service Representative/ADC Manager  
Jessica Dennison, Social Service Representative/Volunteer Manager  
Nancy Stawicki, Food Service Manager  
Elizabeth Sarullo, Food Service Aide  
Gloria Ezan, Administrative Assistant  
Millie Fronko, Recreation Assistant  
Teddy Lacson, Custodian  
Marcella Klarner, Custodian